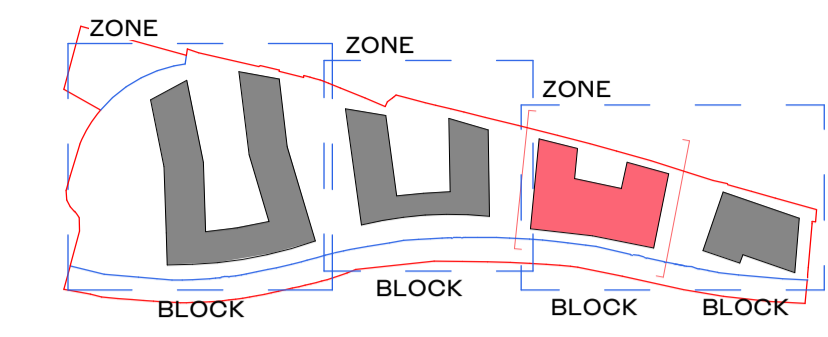


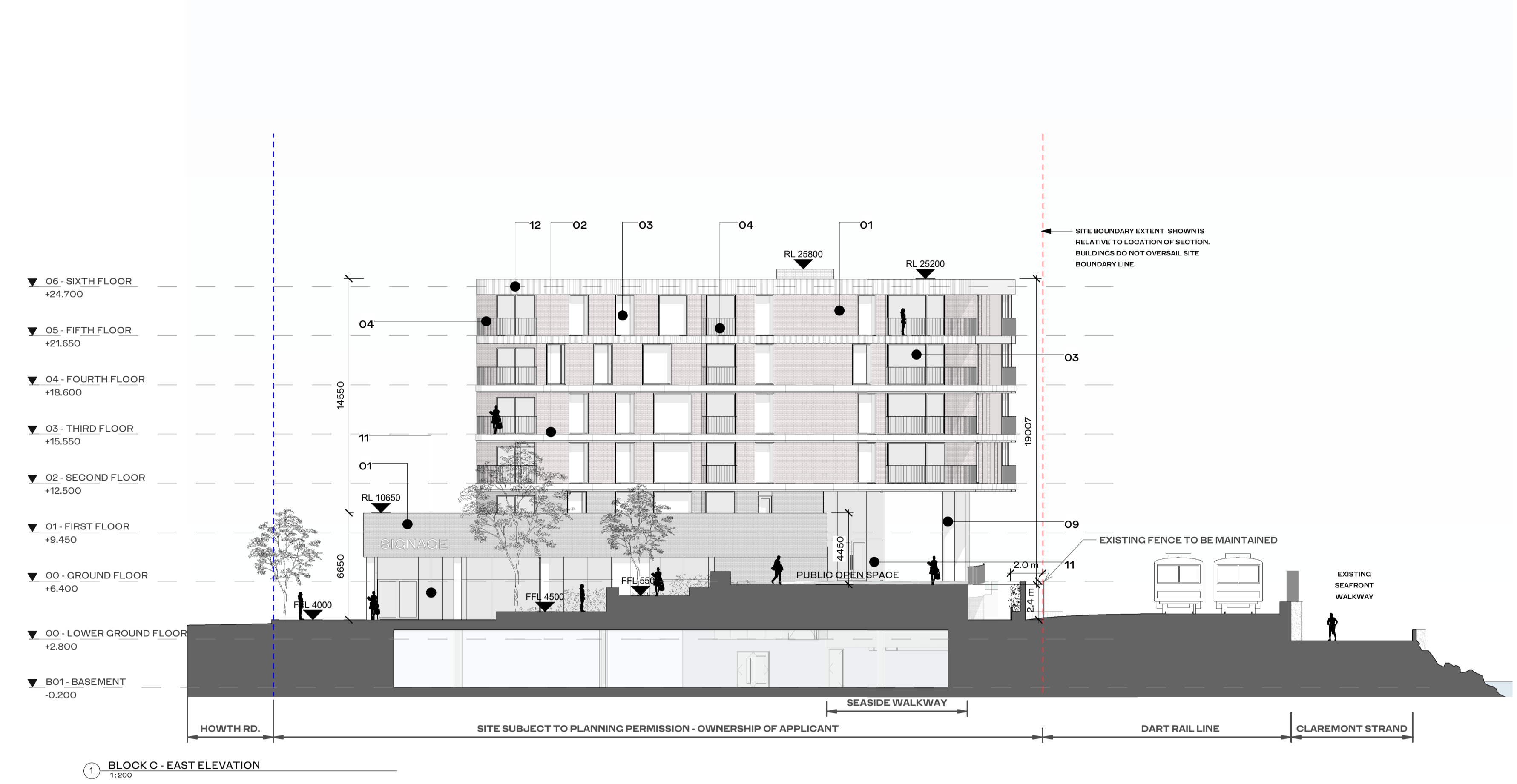
ALL DIMENSIONS TO BE CHECKED ON SITE
 NO DIMENSIONS TO BE SCALED FROM THIS DRAWING
 DRAWING IS TO BE READ IN CONJUNCTION WITH RELEVANT CONSULTANTS DRAWINGS



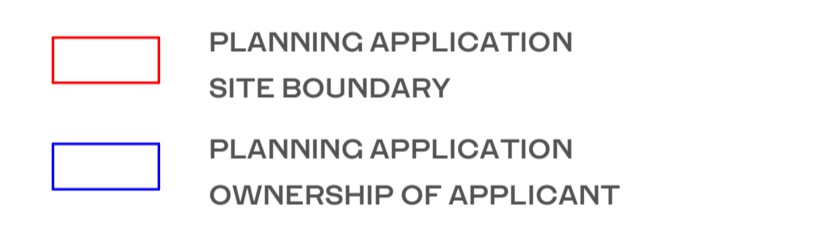
SITE DRAWINGS LEGEND:
 REFER TO BARRÉT MAHONY CIVIL ENGINEERING DRAWINGS FOR ALL DRAINAGE/ ROAD INFORMATION.
 SURVEY INFORMATION PROVIDED BY JONES ENGINEERING ON 23.4.2019.
 PLEASE REFER TO THE PAUL HOGARTH COMPANY LANDSCAPE DRAWINGS FOR ALL INFORMATION ON EXISTING AND PROPOSED TREES, MATERIAL FINISHES AND LAYOUT. ANY REFERENCE TO TREES/ HARD OR SOFT LANDSCAPING IN THIS DRAWING ARE INDICATIVE ONLY.

HJL_ELEVATION FINISHES LEGEND

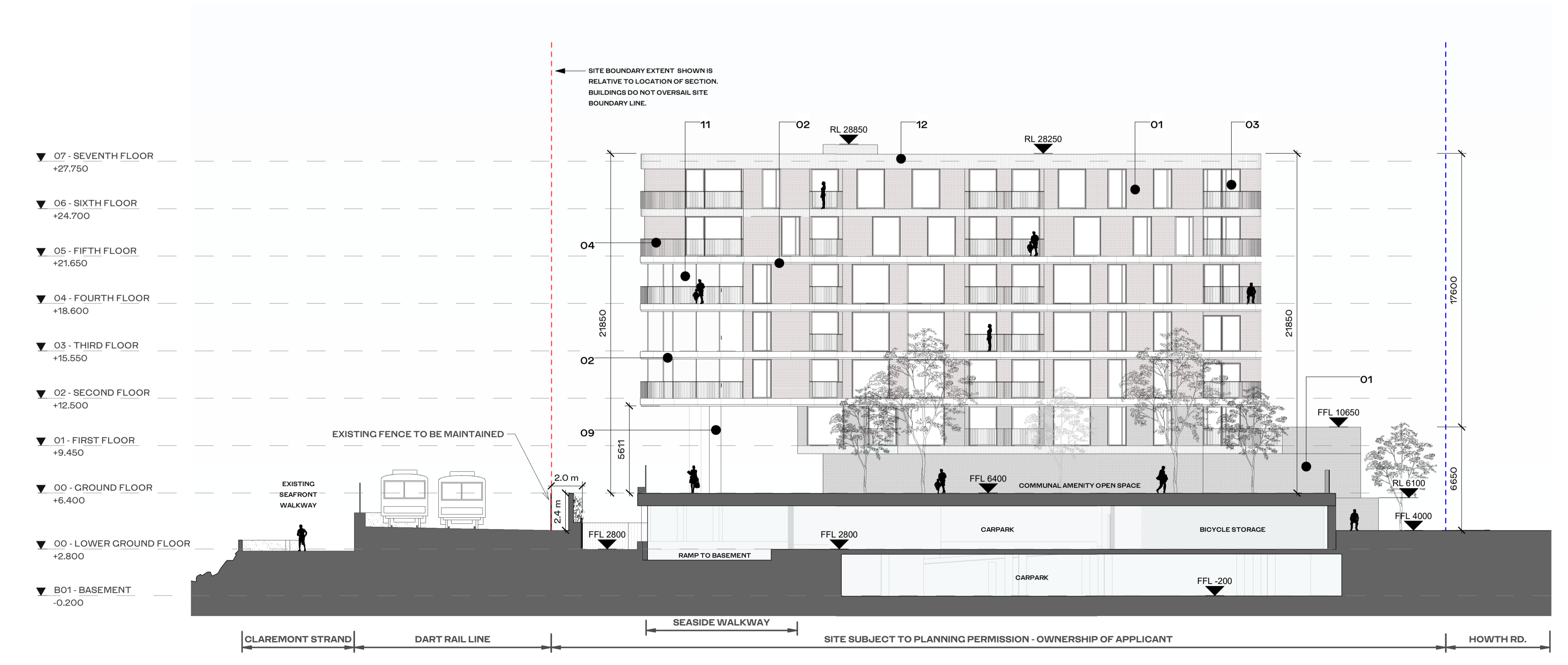
Key Value	Keynote Text
01	TEXTURED BRICK FROM SELECTED PALETTE
02	CERAMIC PANELS OR POLISHED RECONSTITUTED STONE PANEL
03	COMPOSITE ALUMINUM FRAME WINDOW SYSTEM TO SELECT FINISH
04	PPC STEEL BALUSTRADE TO SELECT FINISH
06	PRECAST CONCRETE LINTEL
07	PPC ALUMINUM PANEL TO SELECT RAL FINISH
08	BAGUETTE STYLE CERAMIC OR POLISHED RECONSTITUTED STONE SCREEN
09	CAST IN SITU FAIR FACED CONCRETE
10	FAIR FACED CONCRETE LOW RISE WALL
11	TOGGLE FIXED GLAZING WITH POWDER COATED VERTICAL MULLIONS TO SELECTED RAL
12	TEXTURED BRICK SOLDIER COURSE FROM SELECTED PALETTE
13	FAIR FACED CONCRETE PLINTH
14	PPC ALUMINUM LOUVRES
15	METAL LETTERING - BUILDING
16	METAL LETTERING - SHOP, RESTAURANT
17	PPC ALUMINUM DOOR TO SELECT RAL FINISH
18	VERTICAL METAL SCREWS



1 BLOCK C - EAST ELEVATION
 1:200



ALL APARTMENT TYPES SHOULD BE READ IN CONJUNCTION WITH DRAWING NO.S P1601, P1602, P1603, P1604 AND HOUSING QUALITY



2 BLOCK C - WEST ELEVATION
 1:200

REV	DATE	DESCRIPTION	CHK	DRN
P2	26/11/2019	ISSUED FOR PLANNING APPROVAL	DB	OJ
P1	05/08/2019	ISSUED FOR PAC REQUEST	DB	OJ

STATUS CODE DESCRIPTION

ISSUED FOR PLANNING APPROVAL

CLIENT
 Atlas GP Limited

PROJECT
 Project Claremont

DRAWING
 BLOCK C - ELEVATIONS 01
 EAST, WEST ELEVATIONS

PROJECT NUMBER
 950520

DATE
 26/11/19

SCALE@ A1:
 As indicated

DRAWN/CHECKED:
 OJ/ DB

REVISION	DRAWING NUMBER	STATUS CODE:
P2	CLR-HJL-03-XX-DR-A-2001C	A1

Henry J Lyons

Architecture + Interiors
 henryjlyons.com +353 1 889 3333 info@henryjlyons.com 53.54 Pearse Street Dublin D02 K466